

EMBARGO
APRIL 22, 2025
4 PM CEST

ARC 1100 DICUT® SPONSORING EDITION ARE YOU PRO?



1

**EXECUTIVE
SUMMARY**

P. 4

2

RIDEN BY
THE PROS

P. 7

3

**PRODUCT
SPECIFICATIONS**

P. 11

4

TECHNOLOGIES

P. 14

5

**EXPERT
OPINION**

P. 16



ARC 1100 DICUT® 50
WTS W

1

EXECUTIVE SUMMARY



DT SWISS

ARE YOU **PRO?**

Ever wondered what it feels like to be a pro? With the new ARC 1100 DICUT 50 Sponsoring Edition wheels you now have the chance to ride the same equipment as some of the best riders in the pro peloton. The aero rim, hubs and spokes combined with the WTS Technology make them the fastest wheels in our portfolio. These limited edition wheels feature the double decals that make our pro athletes recognizable from afar. Become a part of the exclusive group of riders rolling on our sponsoring wheels with the finishing touch on your dream build. As you lead the pack, don't be surprised if other cyclists start chasing you, thinking you're a pro.



2

RIDEN BY
THE PROS





FEEL LIKE A PRO

These wheels have been ridden on the world's biggest stages. Now you have the chance to take them for a spin on your own grand tour. The unique double white decals will make you look like a pro from a mile away and help you stand out from the crowd.

AERO WTS

Ensuring you ride the fastest wheel and tire system (WTS), just like the Uno-X Mobility Team's pro riders. The ARC 1100 DICUT 50 WTS W includes the Aero WTS technology. The wheel tire system combines the AERO 111 tire in the front and the Continental GP 5000 in the back.

Find out more about the performance details of the Aero WTS on our Technology Page.

[Learn more](#)

3

PRODUCT SPECIFICATIONS

ARC 1100 DICUT® 50 WTS W

FRONT WHEEL	12 / 100 mm
REAR WHEEL	12 / 142 mm
HUB	180 DICUT® with 36T Ratchet EXP System
BRAKE INTERFACE	Disc, Center Lock
FREEHUB BODY OPTIONS	Shimano Road (SRAM XDR included)
RIM	Carbon, hooked bead, tubeless ready
RIM DIMENSION	622 x 20mm
RIM HEIGHT	50mm
SPOKE FRONT	DT aerolite® II t-head
SPOKE REAR	DT aerolite® II t-head & DT aero comp® II t-head
NIPPLES	DT Pro Lock® hidden aluminum
LACING	24 x 2-cross
WEIGHT FRONT / REAR	From: 629 g / 752 g wheels only From: 959 g / 1113 g with tubes and tire
MAX SYSTEMWEIGHT	110 kg
ASTM CLASS	1
ACCESSORIES INCLUDED	Tubeless tape (mounted), tubeless valve, valve guard, SRAM XDR Road freehub body kit, wheel bag Front tire: Continental AERO 111 26 Rear tire: Continental GP 5000s TR 28 Tube: Continental TPU TUBE SV
PRICE	From 2649 €





4

TECHNOLOGIES

TECHNOLOGIES



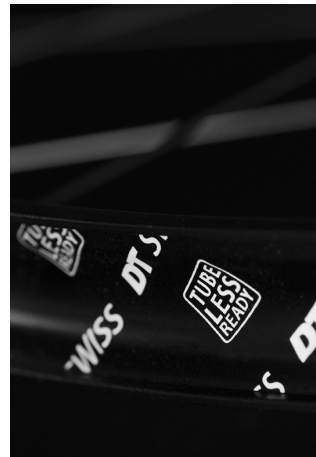
WHEEL TIRE SYSTEM
TECHNOLOGY

[More information →](#)



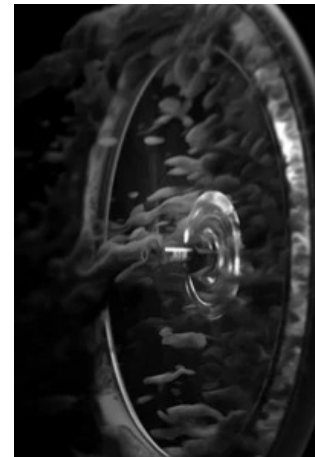
RATCHET EXP
TECHNOLOGY

[More information →](#)



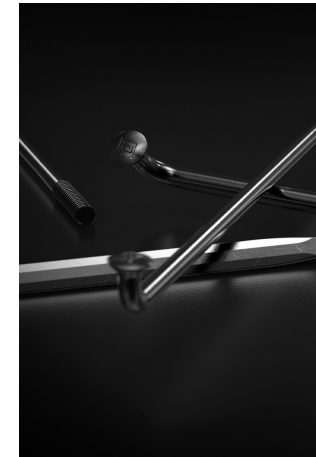
TUBELESS
TECHNOLOGY

[More information →](#)



AERO+
TECHNOLOGY

[More information →](#)



SPOKE
TECHNOLOGY

[More information →](#)



HAND-BUILT
TECHNOLOGY

[More information →](#)

5

EXPERT OPINION

DT SWISS

PRO RIDER'S OPINION

«In a race where seconds decide the podium, a setup that maximizes speed, stability, and control is crucial. Riding DT Swiss ARC 1100 DICUT 50 wheels paired with AERO 111 tires, I feel fast. Their aerodynamic efficiency allows me to save energy in descents, as they roll incredibly well, helping me maintain speed with less effort. They played a decisive role in securing my first podium at the GC of the Tour Down Under.»

MIE BJØRNDAL OTTESTAD

Uno-X Mobility team rider





YOUR CONTACT

For more information, please contact your
DT Swiss representative or contact us directly.

RALF EGGERT
MARKETING MANAGER
+ 41 32 344 69 51
reggert@dtswiss.com

DT SWISS AG
Längfeldweg 101
2504 Biel/Bienne
Switzerland

DT ***SWISS*** ***ENGINEERING*** *PERFORMANCE*