

**DT SWISS** ENGINEERING PERFORMANCE

NEW CARBON GRAVEL WHEELS

**OFF THE ROAD,  
ARE YOU ON  
THE HUNT OR  
OFF THE HOOK?**

**EMBARGO**  
MAY 30, 2024  
3 PM CEST



1

---

**OVERVIEW**

P. 3

2

---

**EXECUTIVE  
SUMMARY**

P. 8

3

---

**TAILORED  
OFF ROAD  
EXPERIENCE**

P. 11

4

---

**PRODUCT  
SPECIFICATIONS**

P. 22

5

---

**TECHNOLOGIES**

P. 26

6

---

**RIDERS'  
OPINIONS**

P. 28

1

---

# OVERVIEW

## TWO **DIFFERENT PATHS** OFF THE ROAD

Once you leave the pavement behind and start your ride off the road, two different paths open up: will you take the gravel adventure into the unknown, or will your primal instinct call you to go hunting on the fast track?



**DT SWISS**

# ADVENTURE OFF THE HOOK

In the unknown, off the road, where the challenges are many, that's where you can let yourself off the hook. To discover these adventures, versatility and confidence are essential. Unleash your inner adventurer and take your gravel riding to the next level with the GRC DICUT 30. The lightweight 30 mm high carbon rim provides not just agility, but also puncture resistance with its wide flanges, even with traction-enhancing, low air pressure.

## 30 MM HIGH RIM





## RACE ON THE HUNT

Are you hunting that first tire mark in the finish line dust or your next personal best? Then the GRC DICUT 50 is your co-pilot for your next gravel stage. The 50 mm high rim based on the Aero+ concept cuts through the air and sends a cloud of dust over your pursuers. Drifts will be a breeze with the handling stability provided by the low steering moment and the inner width of 24 mm.

### 50 MM HIGH RIM







**GRC 1100 DICUT®**  
30 MM / 50 MM



**GRC 1400 DICUT®**  
30 MM / 50 MM



**HGC 1400 SPLINE®**  
30 MM

2

---

# EXECUTIVE SUMMARY







**DT** SWISS

# TAILORED OFF ROAD EXPERIENCE

## **HOOKED RIMS**

In the case of gravel wheels, we believe that hooked rims are the ultimate solution when it comes to safety and ease of use, without compromising on performance.

## **SPECIFIC RIDING BENEFITS**

When you leave the road, you have the choice of two new rims. Their internal width is identical, but they have two different rim heights, adapted to different riding environments and offering specific riding advantages.

## **STRAIGHT OUT OF THE MOLD**

The patent-pending outer carbon layer of our new carbon Gravel wheels enables an unrivaled high-quality finish on the rim surface, meaning it is ready to go, straight out of the mold

## **GRC 30 VS GRC 50**

Adventure vs racing: it is up to you to decide when riding off the road, do you want to be on the hunt or off the hook ?



3

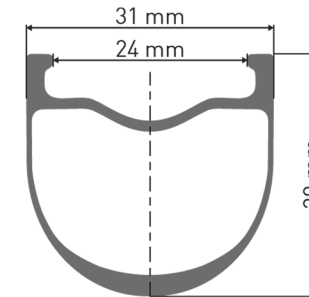
---

**TAILORED**  
OFF ROAD  
EXPERIENCE

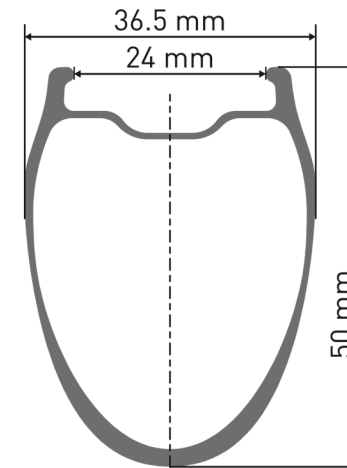
# HOOKED RIMS

With these new wheels in our Gravel portfolio, all our road and gravel wheels are now constructed with hooks. In the case of gravel wheels, we believe that hooked rims are the ultimate solution for safety and ease of use. Your gravel bike mounted with the new GRC wheels will allow you to ride in extreme conditions and environments. Knowing that your tire sits safely on your rim will give you the confidence you need to explore and push it even further.

In addition to the safety benefit, CFD simulations and wind tunnel tests of both hooked and hookless rims showed us a clear aerodynamic advantage for the hooked version, with lower base drag and steering moment.



**GRC 1100 DICUT® 30 MM**  
**GRC 1400 DICUT® 30 MM**



**GRC 1100 DICUT® 50 MM**  
**GRC 1400 DICUT® 50 MM**



## SPECIFIC RIDING **BENEFITS**

When you leave the road, you have the choice of two new rims. Their internal width is identical, 24 mm, which was proven during the development phase to provide the lowest aerodynamic drag while providing ideal support for 40 mm wide gravel tires. The rims have two different rim heights, adapted to different riding environments and offering specific riding advantages.

**DT SWISS**

## 30 MM TO UNHOOK YOU FROM LIMITATIONS

The light weight of the GRC 30 makes your gravel bike adventure-proof. How? Its new shape, with a lower rim height, results in less weight while maintaining relatively low aerodynamic drag. You can also count on the comfort and durability of its wide flanges, which offer improved puncture resistance. The result is greater agility and steering comfort, making you ready for endless adventures!



## OUR LIGHTEST GRAVEL WHEELSET

WHEELSET	RIM HEIGHT	WEIGHT	WEIGHT DIFFERENCE <sup>(1)</sup>
GRC 1100 DICUT® 30	30 mm	1350 g	-252 g
GRC 1400 DICUT® 30	30 mm	1421 g	-181 g
GRC 1100 DICUT® 50	50 mm	1567 g	-35 g
GRC 1400 DICUT® 50	50 mm	1631 g	+29 g
GR 1600 SPLINE® 25	25 mm	1748 g	+146 g
G 1800 SPLINE® 25	25 mm	1835 g	+233 g

<sup>(1)</sup> Compared to the discontinued GRC 1400 SPLINE® 42 (1602 g)



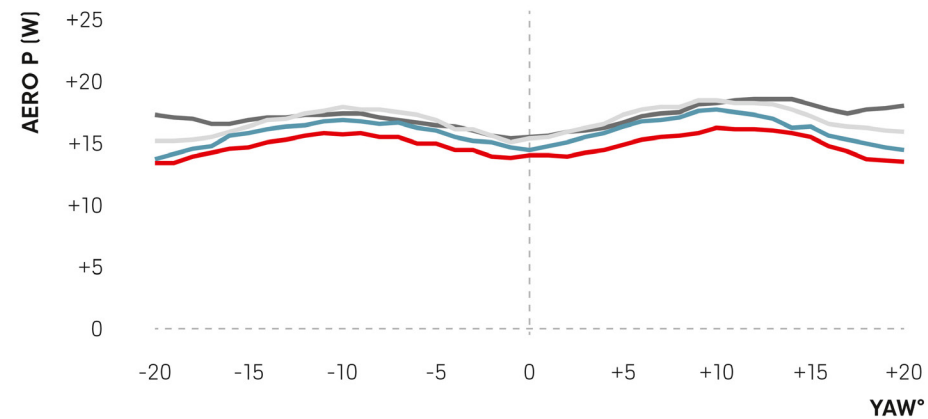


## 50 MM TO HUNT FOR THE WIN

To create the ultimate gravel racing wheels, we took into consideration the whole wheel system, including wide gravel tires. This led to the development of a unique rim shape, allowing the new GRC 50 wheels to reach the lowest aerodynamic drag, setting a new benchmark when tested against the other brands as well as our other Gravel wheels. This new rim shape provides a great compromise between aerodynamic performance and robustness, making it a dangerously fast addition to your off-road racing vehicle.

# LOW AERODYNAMIC DRAG

## DRAG PERFORMANCE COMPETITOR ANALYSIS

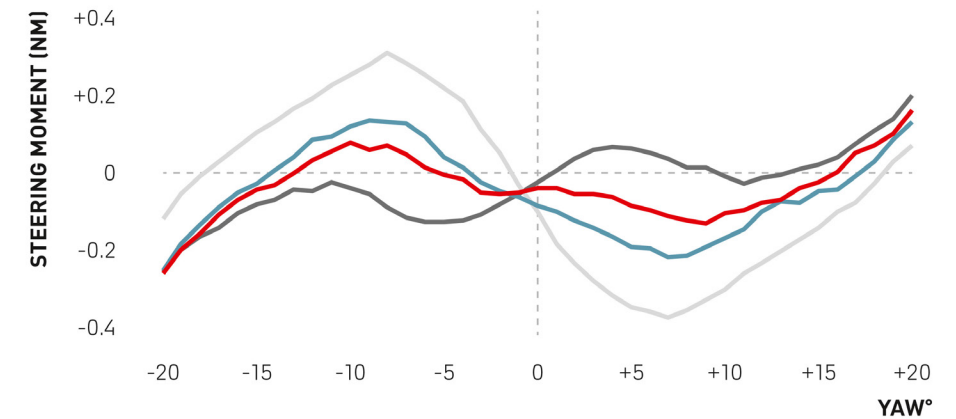


- DT Swiss GRC 1100 DICUT 50
- ENVE SES 4.5 AR
- ZIPP 353 NSW
- HUNT 42 LIMITLESS GRAVEL AERO

*All wheels measured with  
Schwalbe G-ONE RS 40  
at 37.5 km/h*

# LOW STEERING MOMENT

## STEERING MOMENT COMPETITOR ANALYSIS



- DT Swiss GRC 1100 DICUT 50
- ENVE SES 4.5 AR
- ZIPP 353 NSW
- HUNT 42 LIMITLESS GRAVEL AERO

*All wheels measured with  
Schwalbe G-ONE RS 40  
at 37.5 km/h*







DE 10 2021 006 136 A1 2023.06.15

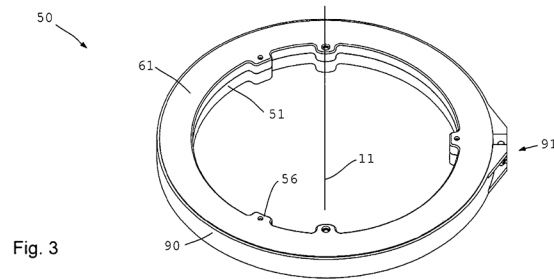


Fig. 3

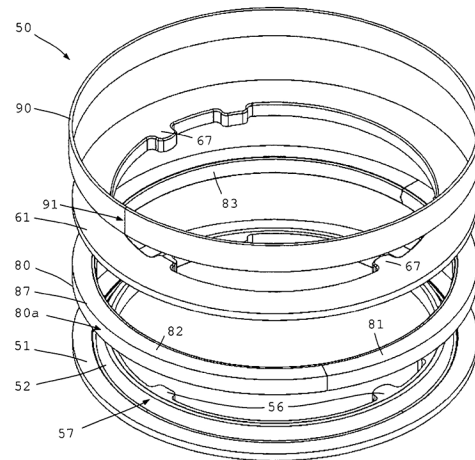


Fig. 4

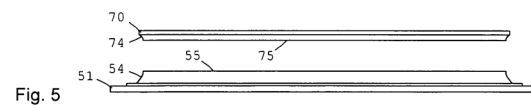


Fig. 5

## STRAIGHT OUT OF THE MOLD

The patent-pending outer carbon layer of our new carbon Gravel wheels enables an unrivaled high-quality finish on the rim surface, meaning it is ready to go, straight out of the mold. The result is an air-pocket-free layup, avoiding resin build-ups, which not only improves reliability but also enhances the sleek design of the rim. The use of a patented process ensures this unique look and avoids the need for a final coating, which also results in weight savings.

**DT SWISS**

# GRC 50 VS. GRC 30

Now it is up to you to decide when riding off the road, do you want to be off the hook or on the hunt:

	GRC 50	GRC 30
FIELD OF USE	Race	Adventure
RIM HEIGHT	50 mm	30 mm
WEIGHT	1567 g	1350 g
RIM DIMENSION	700 C	650 B or 700 C
WEIGHTED AERO DRAG AT 37.5 km/h	14.9 W	17.5 W
KEY RIDING BENEFIT	Speed	Agility
FINISH	Out of the mold	Out of the mold







**DT** SWISS

TAILORED OFF ROAD EXPERIENCE

## **HYBRID-SPECIFIC WHEELS**

For those that love the extra independence provided by e-gravel bikes, a specific wheelset has been developed for you. Based on the new 30 mm high gravel rim and with reinforced components, the HGC 1400 SPLINE ideally suits the requirement of hybrid bikes as well as higher system weight.

4

---

# PRODUCT SPECIFICATIONS

# GRC 1100 DICUT®

FRONT WHEEL	12 / 100 mm
REAR WHEEL	12 / 142 mm
HUB	180 DICUT® with 36T Ratchet EXP System
BRAKE INTERFACE	Disc, Center Lock
FREEHUB BODY OPTIONS	Shimano Road (SRAM XDR included), Shimano MicroSpline, Campagnolo N3W
RIM	Carbon, hooked bead, tubeless ready
RIM DIMENSION	584 x 24 mm (only available for the 30mm rim height) 622 x 24 mm
RIM HEIGHT	30 & 50 mm
SPOKE FRONT	T-head spokes, DT aerolite® II, black
SPOKE REAR	T-head spokes, DT aerolite® II, DT aero comp® II, black
NIPPLES	DT Pro Lock® hidden aluminum
LACING	24 x 2-cross
WEIGHT SET	From: 1350 g (30 mm rim height) From: 1567 g (50 mm rim height)
MAX SYSTEMWEIGHT	130 kg
ASTM CLASS	2
ACCESSORIES INCLUDED	Tubeless tape (mounted), tubeless valve, valve guard, SRAM XDR Road freehub body kit (Shimano Road only), wheel bag
PRICE	From 2499,80 EUR, 2499,80 CHF, 2999,80 USD, 2299,98 GBP



# GRC 1400 DICUT®

FRONT WHEEL	12 / 100 mm
REAR WHEEL	12 / 142 mm
HUB	240 DICUT® with 36T Ratchet EXP System
BRAKE INTERFACE	Disc, Center Lock
FREEHUB BODY OPTIONS	Shimano Road (SRAM XDR included), Shimano MicroSpline, Campagnolo N3W
RIM	Carbon, hooked bead, tubeless ready
RIM DIMENSION	584 x 24 mm (only available for the 30mm rim height) 622 x 24 mm
RIM HEIGHT	30 & 50 mm
SPOKE FRONT	T-head spokes, DT aero comp® II, black
SPOKE REAR	T-head spokes, DT aero comp® II, black
NIPPLES	DT Pro Lock® hidden aluminum
LACING	24 x 2-cross
WEIGHT SET	From: 1421 g (30 mm rim height) From: 1631 g (50 mm rim height)
MAX SYSTEMWEIGHT	130 kg
ASTM CLASS	2
ACCESSORIES INCLUDED	Tubeless tape (mounted), tubeless valve, valve guard, SRAM XDR Road freehub body kit (Shimano Road only), wheel bag
PRICE	From 2049,80 EUR, 2049,80 CHF, 2399,80 USD, 1864,98 GBP



**PRODUCT PAGE** (available from May 30, 2024)

<https://www.dtswiss.com/en/wheels/wheels-road/gravel/grc-1400-dicut>



# HGC 1400 SPLINE®

FRONT WHEEL	12 / 100 mm; 12 / 110 mm
REAR WHEEL	12 / 142 mm; 12 / 148 mm
HUB	240 Straightpull with Ratchet EXP OS
BRAKE INTERFACE	Disc, Center Lock
FREEHUB BODY OPTIONS	Shimano Road (SRAM XDR included) Shimano MicroSpline (622 mm and non-boost only)
RIM	Carbon, hooked bead, tubeless ready
RIM DIMENSION	584 x 24 mm 622 x 22 mm
RIM HEIGHT	30 mm
SPOKE FRONT	DT aero comp® hybrid straightpull, black
SPOKE REAR	DT aero comp® hybrid straightpull, black
NIPPLES	DT Pro Lock® hidden aluminum
LACING FRONT	24 x 2-cross
LACING REAR	28 x 3-cross
WEIGHT SET	From: 1476 g
MAX SYSTEMWEIGHT	140 kg
ASTM CLASS	2
ACCESSORIES INCLUDED	Tubeless tape (mounted), tubeless valve, valve guard, SRAM XDR Road freehub body kit
PRICE	From 2099,80 EUR, 2099,80 CHF, 2449,80 USD, 1949,98 GBP



**PRODUCT PAGE** (available from May 30, 2024)

<https://www.dtswiss.com/en/wheels/wheels-road/hybrid-gravel/hgc-1400-spline>

5

---

# TECHNOLOGIES

# TECHNOLOGIES



**RATCHET**  
TECHNOLOGIES  
[More information →](#)



**TUBELESS**  
TECHNOLOGY  
[More information →](#)



**BEARING**  
TECHNOLOGY  
[More information →](#)



**SPOKE**  
TECHNOLOGY  
[More information →](#)



**HAND-BUILT**  
TECHNOLOGY  
[More information →](#)

6

---

# RIDERS' OPINIONS



**DT SWISS**

# CAROLIN SCHIFF

## CANYON CLLCTV

«I'm really happy with the new gravel wheels. Already during the first tests I felt super fast, which was confirmed during the race at Traka. In the setup with the wide gravel tires, the wheels overcame the irregularities of the gravel track without losing any speed. And one more important point: from a visual point of view the GRC 50 looks really good on my bike.»

**CAROLIN SCHIFF**  
CANYON CLLCTV

PHOTOGRAPHY: THE TRAKA / GRAVEL EARTH SERIES







## NILS CORREVON

### PAS RACING

«Gravel racing is getting more ferocious than ever. The new aero designed rim and state of the art 180 hubs unlock a new level of performance to fight for every position. The new GRCs are now even faster with the same level of reliability they were known for.»

**NILS CORREVON**  
PAS RACING



**DT SWISS**

# KAROLINA MIGON PAS RACING

«Not only are they incredibly aerodynamic and light, but they're also remarkably comfortable, even during long, grueling races. I took them out on the Traka 360, a challenging course with all sorts of terrain, and they handled it like a dream. These wheels gave me the speed and stability I needed to win, even in tough, muddy conditions. If you're looking for performance and reliability, it means that you are looking for the GRC 1100 DICUT!»

**KAROLINA MIGON**  
PAS RACING

PHOTOGRAPHY: THE TRAKA / GRAVEL EARTH SERIES









# YOUR **CONTACT**

For more information, please contact your  
DT Swiss representative or contact us directly.

**RALF EGGERT**  
MARKETING MANAGER  
+ 41 32 344 69 51  
[reggert@dtswiss.com](mailto:reggert@dtswiss.com)

**DT SWISS AG**  
Längfeldweg 101  
2504 Biel/Bienne  
Switzerland

***DT*** ***SWISS*** ***ENGINEERING*** *PERFORMANCE*

© 2024 DT SWISS AG. ALL RIGHTS RESERVED. ALL INDICATIONS WITHOUT ENGAGEMENT, SUBJECT TO MODIFICATIONS.  
DESIGNED AND EDITED BY DT SWISS AG, SWITZERLAND. PHOTOGRAPHY: DT SWISS AG, GAUDENZ DANUSER, THE TRAKA,  
GRAVEL EARTH SERIES, NILS LAENGNER